

Jane Scott Barsanti Communications Inc.

From 1992 to 2007, I ran my own graphic design and communications company in Sault Ste. Marie, Ontario, while continuing to paint and create greeting cards and prints. In May 2007, I moved to Southern Ontario to be closer to the action for submitting my work to art shows since these were few and far between in the north. I had decided to focus on this aspect of my career, but I am still available for freelance assignments in the creative design field.

Contact Information

Jane Scott Barsanti, B.A., R.G.D. Emeritus
10 Summitcrest Drive, #3
Toronto, ON. M9P 1G8
(416) 792-1146

This page features some of the LOGOS that I have created...



Algoma University College



Jane Scott Barsanti
Communications Inc.



**Sault Ste. Marie Airport
Development Corporation**

Sault Ste. Marie Airport



General Hospital 100th Anniversary



Algoma Forest Coalition



The Scott Tournament of Hearts
Ontario Championship 1996
Sault Ste. Marie

DIRECT SEEDING BLACK SPRUCE AND JACK PINE: A Field Guide for Northern Ontario

This is a sample of a 254 page handbook that I created for the **Canadian Forest Service** in 2005 [for forestry workers out in the field]. I did all layout and design, from supplied text and photos.

I also did some of the artwork as well as photo enhancement in Photoshop.

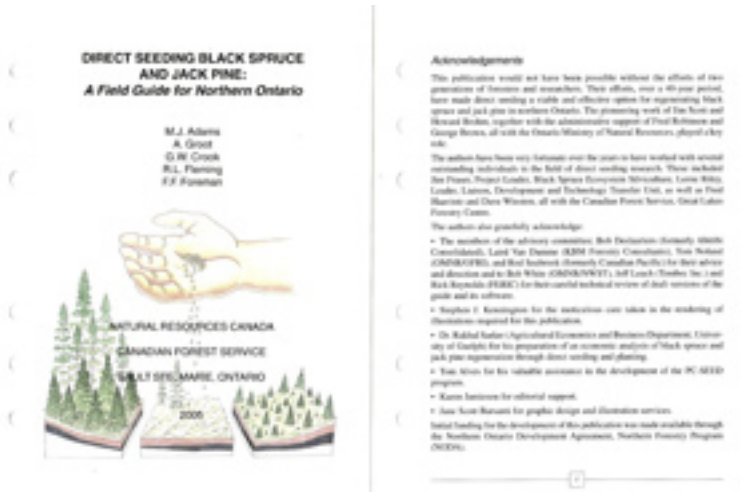
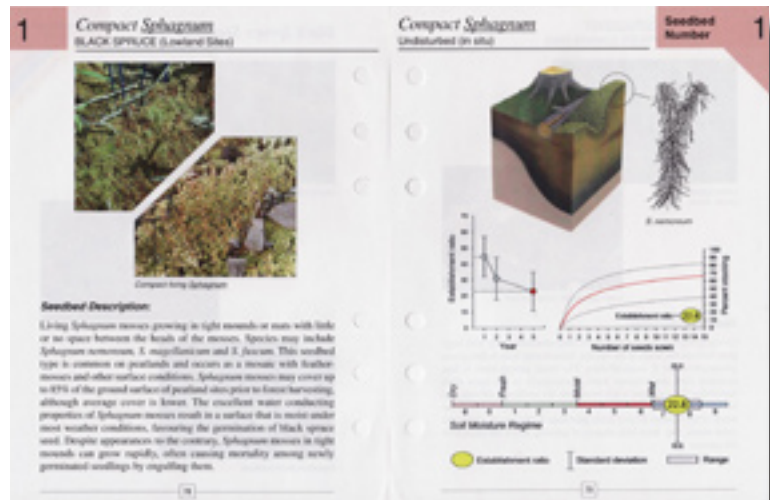
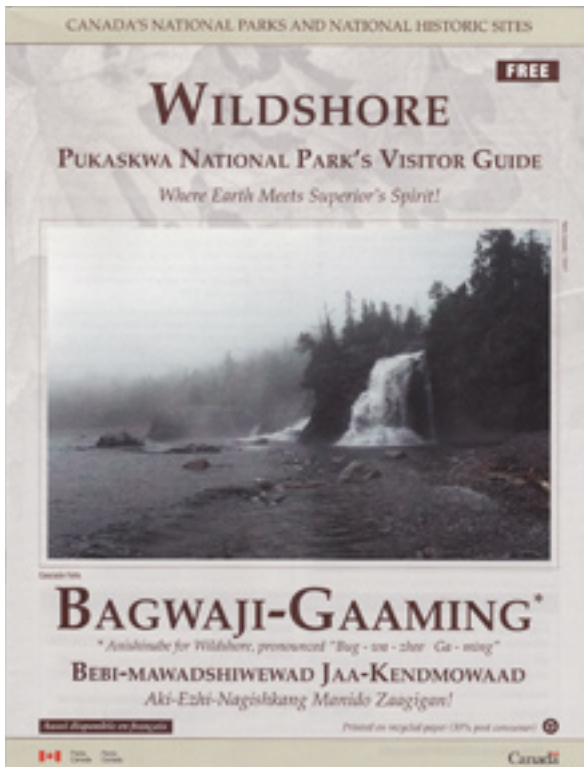


Table of Contents	
Acknowledgements	1
About the Guide	2
Table of Contents	3
1.0 ORIENTATION	5
1.1 Introduction	5
1.2 Background and Historical Perspective of Direct Seeding	6
1.3 How to Use the Guide	6
2.0 SEEDING AS A REGENERATION OPTION	9
2.1 What Are the Prospects for Direct Seeding?	9
2.2 What Are the Principal Advantages and Disadvantages of Direct Seeding?	9
2.3 Which Forest Types Are Most Suitable for Direct Seeding?	10
2.3.1 Assumptions used in cost calculations	10
2.3.2 Results of cost comparison	11
2.3.3 Future costs	12
2.3.4 Pros and cons of direct seeding	12
2.3.5 Seeding	13
3.0 THE SITE	15
3.1 What Are the Rules of FSC and PFC in Site Selection?	15
3.1.1 Pre-treatment FSC points	16
3.1.2 What Sites Are Most Suitable for Direct Seeding?	16
3.1.3 Potential sites for direct seeding jack pine in northwestern Ontario	16
3.1.4 Potential sites for direct seeding black spruce in northwestern Ontario	17
3.1.5 Potential sites for direct seeding black spruce in northwestern Ontario	17
3.1.6 Potential sites for direct seeding black spruce in northwestern Ontario	17
3.1.7 Potential sites for direct seeding black spruce in northwestern Ontario	17
3.1.8 Potential sites for direct seeding black spruce in northwestern Ontario	17
3.1.9 Potential sites for direct seeding black spruce in northwestern Ontario	17
3.1.10 Potential sites for direct seeding black spruce in northwestern Ontario	17
3.1.11 Potential sites for direct seeding black spruce in northwestern Ontario	17
3.1.12 Potential sites for direct seeding black spruce in northwestern Ontario	17
3.1.13 Potential sites for direct seeding black spruce in northwestern Ontario	17
3.1.14 Potential sites for direct seeding black spruce in northwestern Ontario	17
3.1.15 Potential sites for direct seeding black spruce in northwestern Ontario	17
3.1.16 Potential sites for direct seeding black spruce in northwestern Ontario	17
3.1.17 Potential sites for direct seeding black spruce in northwestern Ontario	17
3.1.18 Potential sites for direct seeding black spruce in northwestern Ontario	17
3.1.19 Potential sites for direct seeding black spruce in northwestern Ontario	17
3.1.20 Potential sites for direct seeding black spruce in northwestern Ontario	17
3.1.21 Potential sites for direct seeding black spruce in northwestern Ontario	17
3.1.22 Potential sites for direct seeding black spruce in northwestern Ontario	17
3.1.23 Potential sites for direct seeding black spruce in northwestern Ontario	17
3.1.24 Potential sites for direct seeding black spruce in northwestern Ontario	17
3.1.25 Potential sites for direct seeding black spruce in northwestern Ontario	17
3.1.26 Potential sites for direct seeding black spruce in northwestern Ontario	17
3.1.27 Potential sites for direct seeding black spruce in northwestern Ontario	17
3.1.28 Potential sites for direct seeding black spruce in northwestern Ontario	17
3.1.29 Potential sites for direct seeding black spruce in northwestern Ontario	17
3.1.30 Potential sites for direct seeding black spruce in northwestern Ontario	17
3.1.31 Potential sites for direct seeding black spruce in northwestern Ontario	17
3.1.32 Potential sites for direct seeding black spruce in northwestern Ontario	17
3.1.33 Potential sites for direct seeding black spruce in northwestern Ontario	17
3.1.34 Potential sites for direct seeding black spruce in northwestern Ontario	17
3.1.35 Potential sites for direct seeding black spruce in northwestern Ontario	17
3.1.36 Potential sites for direct seeding black spruce in northwestern Ontario	17
3.1.37 Potential sites for direct seeding black spruce in northwestern Ontario	17
3.1.38 Potential sites for direct seeding black spruce in northwestern Ontario	17
3.1.39 Potential sites for direct seeding black spruce in northwestern Ontario	17
3.1.40 Potential sites for direct seeding black spruce in northwestern Ontario	17
3.1.41 Potential sites for direct seeding black spruce in northwestern Ontario	17
3.1.42 Potential sites for direct seeding black spruce in northwestern Ontario	17
3.1.43 Potential sites for direct seeding black spruce in northwestern Ontario	17
3.1.44 Potential sites for direct seeding black spruce in northwestern Ontario	17
3.1.45 Potential sites for direct seeding black spruce in northwestern Ontario	17
3.1.46 Potential sites for direct seeding black spruce in northwestern Ontario	17
3.1.47 Potential sites for direct seeding black spruce in northwestern Ontario	17
3.1.48 Potential sites for direct seeding black spruce in northwestern Ontario	17
3.1.49 Potential sites for direct seeding black spruce in northwestern Ontario	17
3.1.50 Potential sites for direct seeding black spruce in northwestern Ontario	17
3.1.51 Potential sites for direct seeding black spruce in northwestern Ontario	17
3.1.52 Potential sites for direct seeding black spruce in northwestern Ontario	17
3.1.53 Potential sites for direct seeding black spruce in northwestern Ontario	17
3.1.54 Potential sites for direct seeding black spruce in northwestern Ontario	17
3.1.55 Potential sites for direct seeding black spruce in northwestern Ontario	17
3.1.56 Potential sites for direct seeding black spruce in northwestern Ontario	17
3.1.57 Potential sites for direct seeding black spruce in northwestern Ontario	17
3.1.58 Potential sites for direct seeding black spruce in northwestern Ontario	17
3.1.59 Potential sites for direct seeding black spruce in northwestern Ontario	17
3.1.60 Potential sites for direct seeding black spruce in northwestern Ontario	17
3.1.61 Potential sites for direct seeding black spruce in northwestern Ontario	17
3.1.62 Potential sites for direct seeding black spruce in northwestern Ontario	17
3.1.63 Potential sites for direct seeding black spruce in northwestern Ontario	17
3.1.64 Potential sites for direct seeding black spruce in northwestern Ontario	17
3.1.65 Potential sites for direct seeding black spruce in northwestern Ontario	17
3.1.66 Potential sites for direct seeding black spruce in northwestern Ontario	17
3.1.67 Potential sites for direct seeding black spruce in northwestern Ontario	17
3.1.68 Potential sites for direct seeding black spruce in northwestern Ontario	17
3.1.69 Potential sites for direct seeding black spruce in northwestern Ontario	17
3.1.70 Potential sites for direct seeding black spruce in northwestern Ontario	17
3.1.71 Potential sites for direct seeding black spruce in northwestern Ontario	17
3.1.72 Potential sites for direct seeding black spruce in northwestern Ontario	17
3.1.73 Potential sites for direct seeding black spruce in northwestern Ontario	17
3.1.74 Potential sites for direct seeding black spruce in northwestern Ontario	17
3.1.75 Potential sites for direct seeding black spruce in northwestern Ontario	17
3.1.76 Potential sites for direct seeding black spruce in northwestern Ontario	17
3.1.77 Potential sites for direct seeding black spruce in northwestern Ontario	17
3.1.78 Potential sites for direct seeding black spruce in northwestern Ontario	17
3.1.79 Potential sites for direct seeding black spruce in northwestern Ontario	17
3.1.80 Potential sites for direct seeding black spruce in northwestern Ontario	17
3.1.81 Potential sites for direct seeding black spruce in northwestern Ontario	17
3.1.82 Potential sites for direct seeding black spruce in northwestern Ontario	17
3.1.83 Potential sites for direct seeding black spruce in northwestern Ontario	17
3.1.84 Potential sites for direct seeding black spruce in northwestern Ontario	17
3.1.85 Potential sites for direct seeding black spruce in northwestern Ontario	17
3.1.86 Potential sites for direct seeding black spruce in northwestern Ontario	17
3.1.87 Potential sites for direct seeding black spruce in northwestern Ontario	17
3.1.88 Potential sites for direct seeding black spruce in northwestern Ontario	17
3.1.89 Potential sites for direct seeding black spruce in northwestern Ontario	17
3.1.90 Potential sites for direct seeding black spruce in northwestern Ontario	17
3.1.91 Potential sites for direct seeding black spruce in northwestern Ontario	17
3.1.92 Potential sites for direct seeding black spruce in northwestern Ontario	17
3.1.93 Potential sites for direct seeding black spruce in northwestern Ontario	17
3.1.94 Potential sites for direct seeding black spruce in northwestern Ontario	17
3.1.95 Potential sites for direct seeding black spruce in northwestern Ontario	17
3.1.96 Potential sites for direct seeding black spruce in northwestern Ontario	17
3.1.97 Potential sites for direct seeding black spruce in northwestern Ontario	17
3.1.98 Potential sites for direct seeding black spruce in northwestern Ontario	17
3.1.99 Potential sites for direct seeding black spruce in northwestern Ontario	17
3.1.100 Potential sites for direct seeding black spruce in northwestern Ontario	17





This is the Visitor Guide for **Pukaskwa National Park**. I did all layout and design from supplied text and photos. I also created the French version of this book.

I also did all of the graphic design for a 194 page book for the Canadian Forest Service:

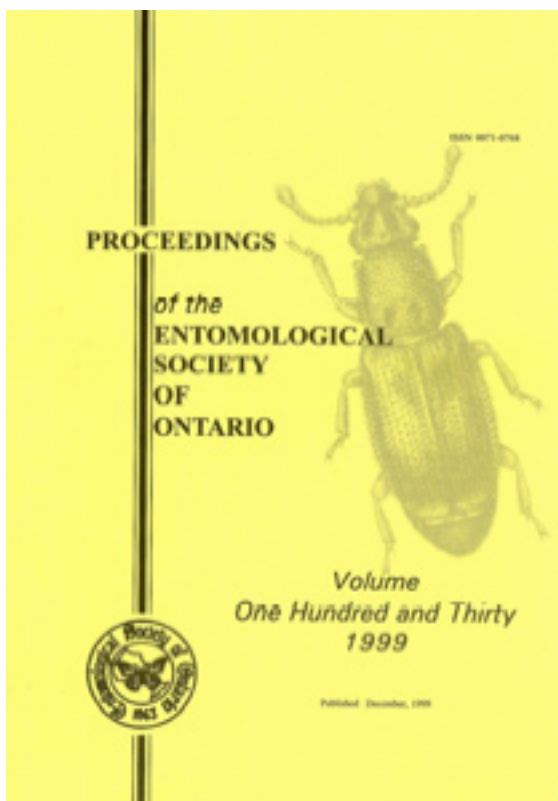
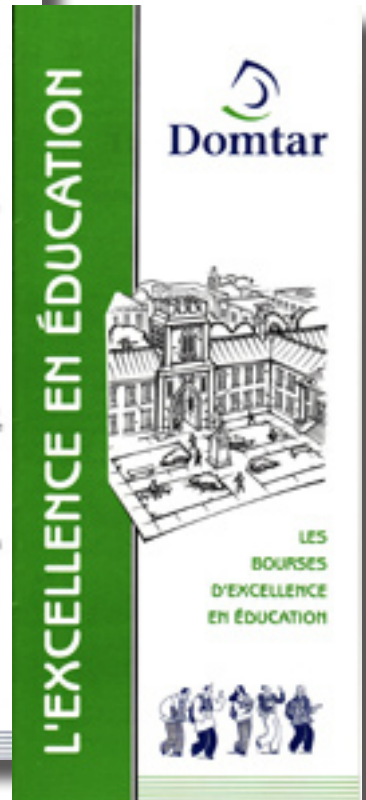
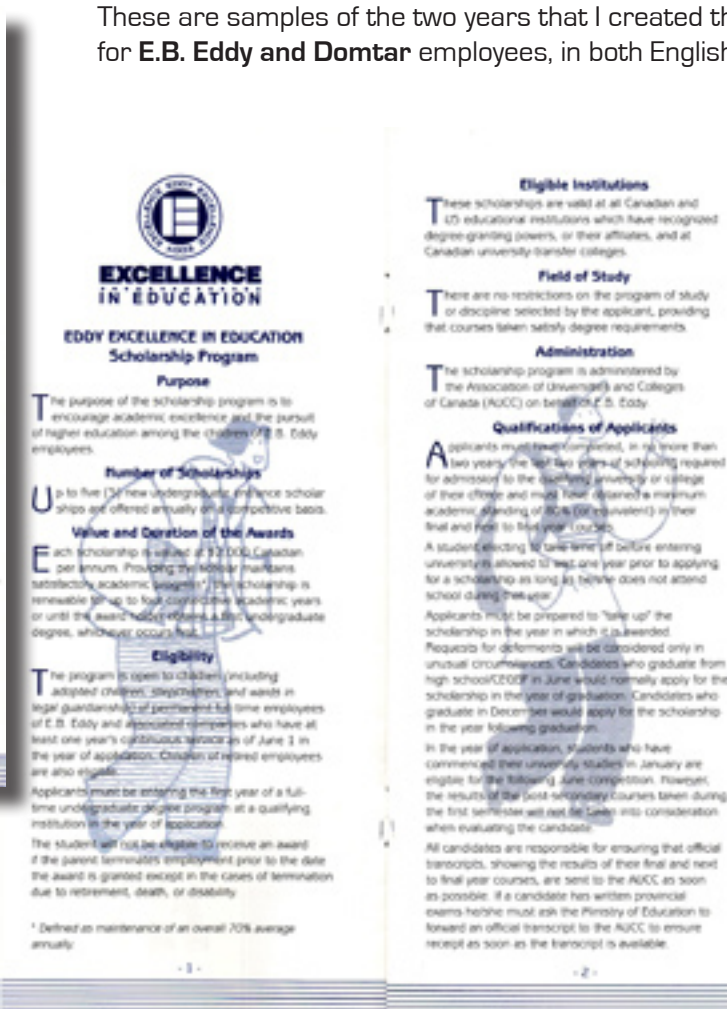
Scarratt, J.B. 2001. Black sturgeon boreal mixedwood research project: establishment report.

Natural Resources Canada, Canadian Forest Service, Great Lakes Forestry Centre, Sault Ste. Marie, Ontario. 194p.

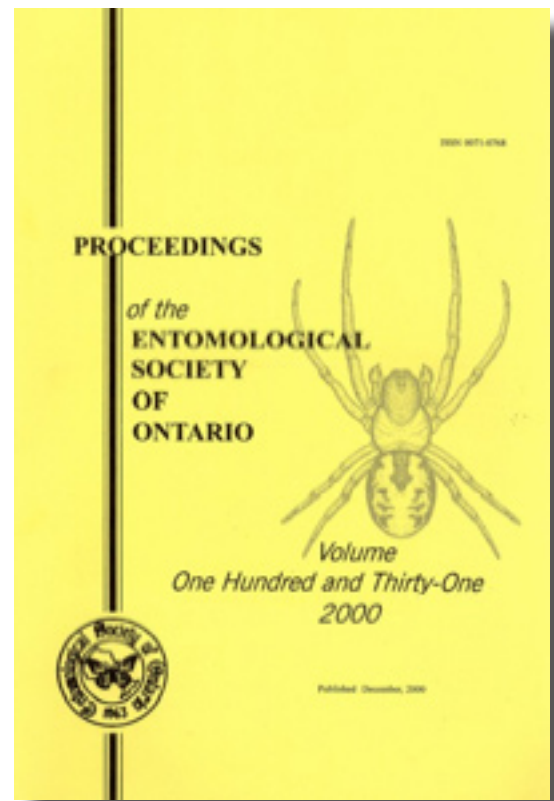
The panel below is part of a 8 panel display that I helped to create for **Great Lakes Power**. Panels were about 10' x 6' and I did all graphic design.

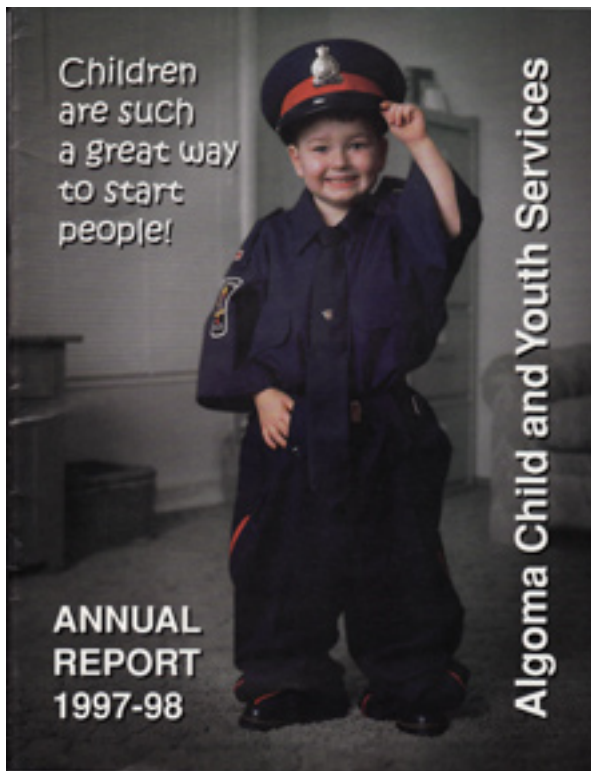


These are samples of the two years that I created the scholarship brochures for E.B. Eddy and Domtar employees, in both English and French.



In 1999 and again in 2000, I was contracted to create the Journal for the Entomological Society of Ontario. These Journals were printed by the U of T Press and I did all layout, design and pre-press preparation.





These photos were part of a campaign that I created for the **Algoma Child and Youth Services**. My associate, Bill Howe, was the photographer for this campaign. I also created and designed their newsletter on a regular basis.



I created the logo for the **Algoma Access Centre**; designed all of their brochures and newsletters; and also helped them with their marketing.



First Nation Forestry Newsletter

For 6 years, I created the [Ontario] First Nation Forestry Newsletter for the Canadian Forest Service. I interviewed and wrote the stories, as well as all of the graphic design components of this publication (English and French). I also made all printing arrangements.

Interest in First Nation Communities

First Nations is a very busy and diverse group of communities - which is why and changing the way in the context of this issue.

For the FNFP, the first step was to identify the communities. They have already placed a high priority on the forestry sector, and the FNFP staff has been working with them to develop a forestry strategy.

For the FNFP, the first step was to identify the communities. They have already placed a high priority on the forestry sector, and the FNFP staff has been working with them to develop a forestry strategy.



For the FNFP, the first step was to identify the communities. They have already placed a high priority on the forestry sector, and the FNFP staff has been working with them to develop a forestry strategy.

For the FNFP, the first step was to identify the communities. They have already placed a high priority on the forestry sector, and the FNFP staff has been working with them to develop a forestry strategy.

BULLETIN FORESTIER DES PREMIÈRES NATIONS

Le bulletin sur le Programme forestier des Premières Nations (PFNP) en Ontario
Volume 3, printemps 2002

Bienvenue à notre dernier numéro

Voilà le troisième numéro du Bulletin sur le Programme forestier des Premières Nations (PFNP) en Ontario. Depuis le lancement du programme, il y a eu de nombreuses activités, mais il n'est pas possible de les toutes présenter dans ce bulletin. Cependant, nous avons pu présenter quelques-unes de ces activités, notamment les ateliers de planification forestière et les ateliers de planification forestière.

Le bulletin sur le Programme forestier des Premières Nations (PFNP) en Ontario est un bulletin qui présente les activités du programme et les résultats de ces activités. Le bulletin est un bulletin qui présente les activités du programme et les résultats de ces activités.



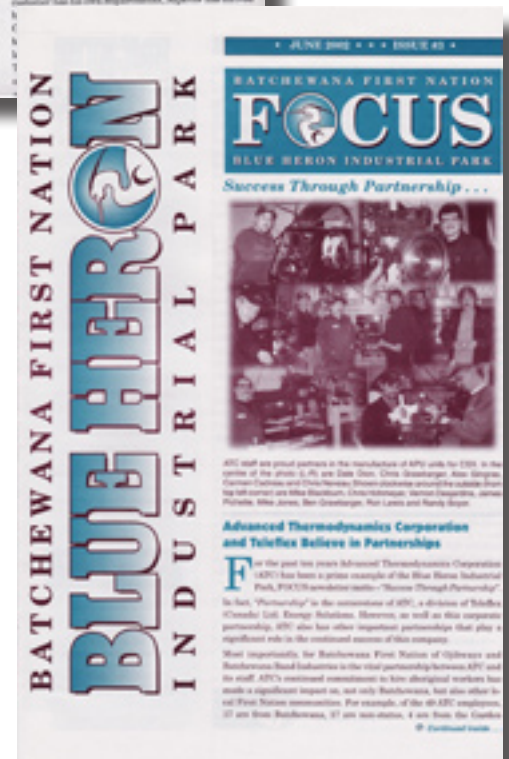
Ontario Lottery Corporation

In 1994, I worked on an eight month graphic design contract at the Ontario Lottery Corporation. One of my main responsibilities was the internal monthly newsletter, **Lotto Watch**. While I was there, we won an national award for this newsletter.



Batchewana First Nation Focus Newsletter for the Blue Heron Industrial Park

For about 5 years, I created the Batchewana First Nation Focus Newsletter for the Blue Heron Industrial Park. I interviewed and wrote the stories; took the photos; did all graphic design; and I also made printing arrangements.





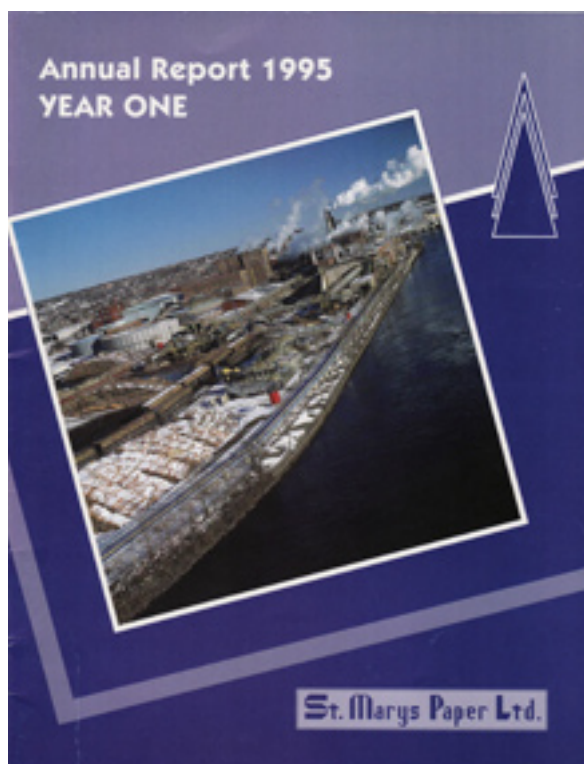
City Hall - Sault Ste. Marie

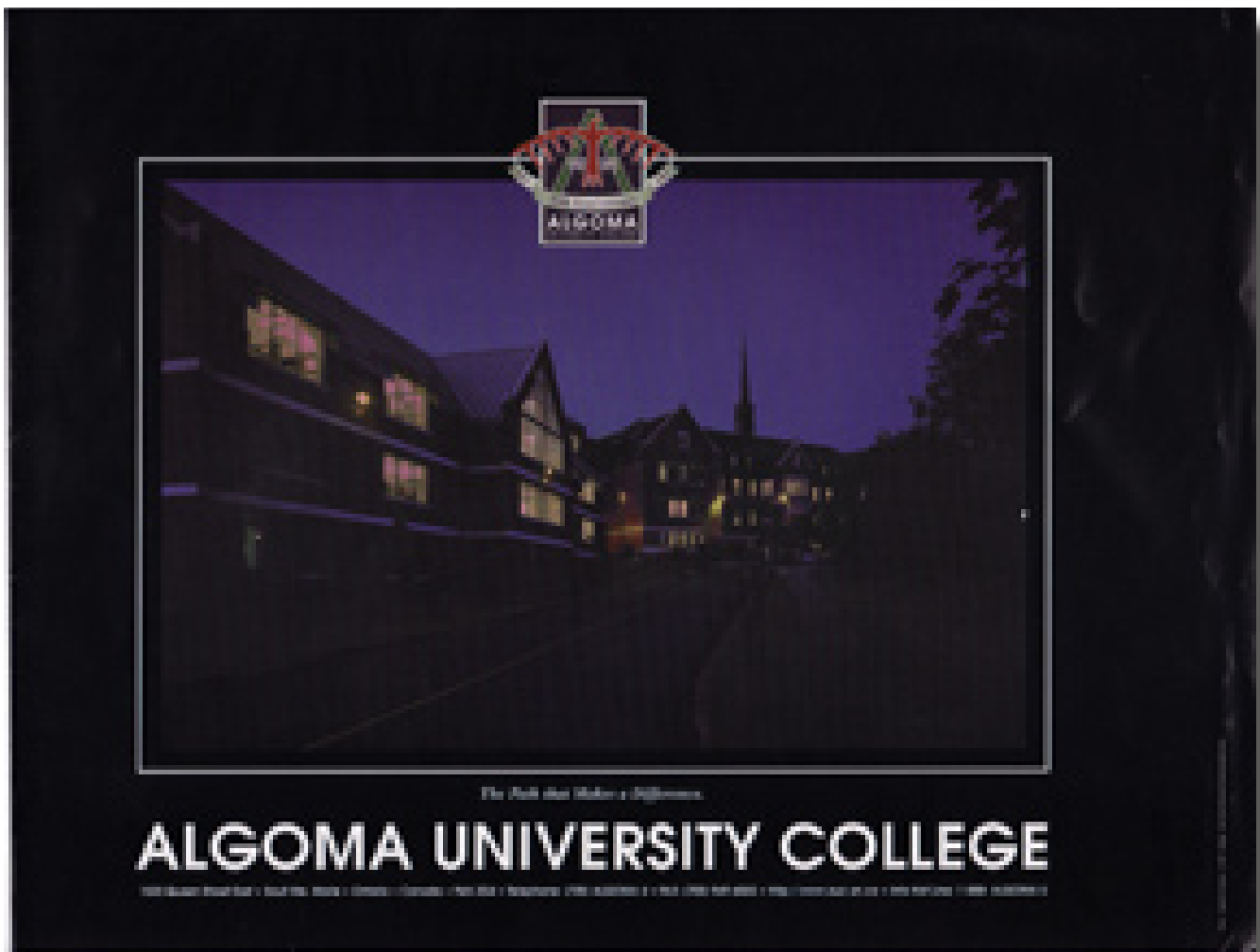
This 16 page booklet was created for the Planning Department at City Hall, to focus on developing the nearby Gateway Site.

I created the design and my associate, Bill Howe, was the photographer.



I did Annual Reports for several organizations over the years. This is a sample of one that I created for St. Mary's Paper in 1995.





Algoma University College

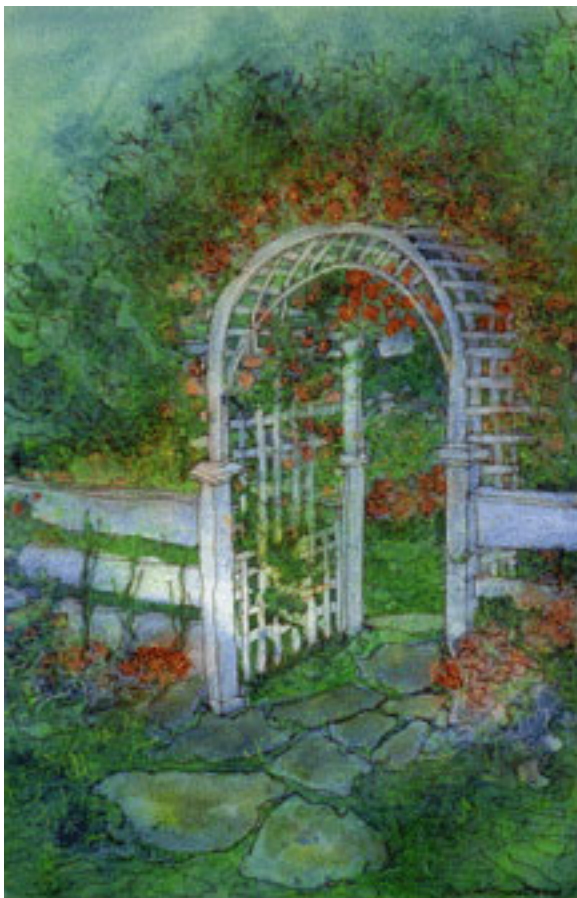
As well as creating the logo for Algoma University College, I also created marketing materials - such as posters, brochures and handouts for recruitment.



Jane Scott Barsanti

Samples of my photography & art work.
Please visit my web site for further samples:
<http://www.janescottbarsanti.com>

Photography



Down the Garden Path

Janie Greeting Cards - 1981



Jane Scott Barsanti Watercolours



The Sound of Silence



Wildflowers